



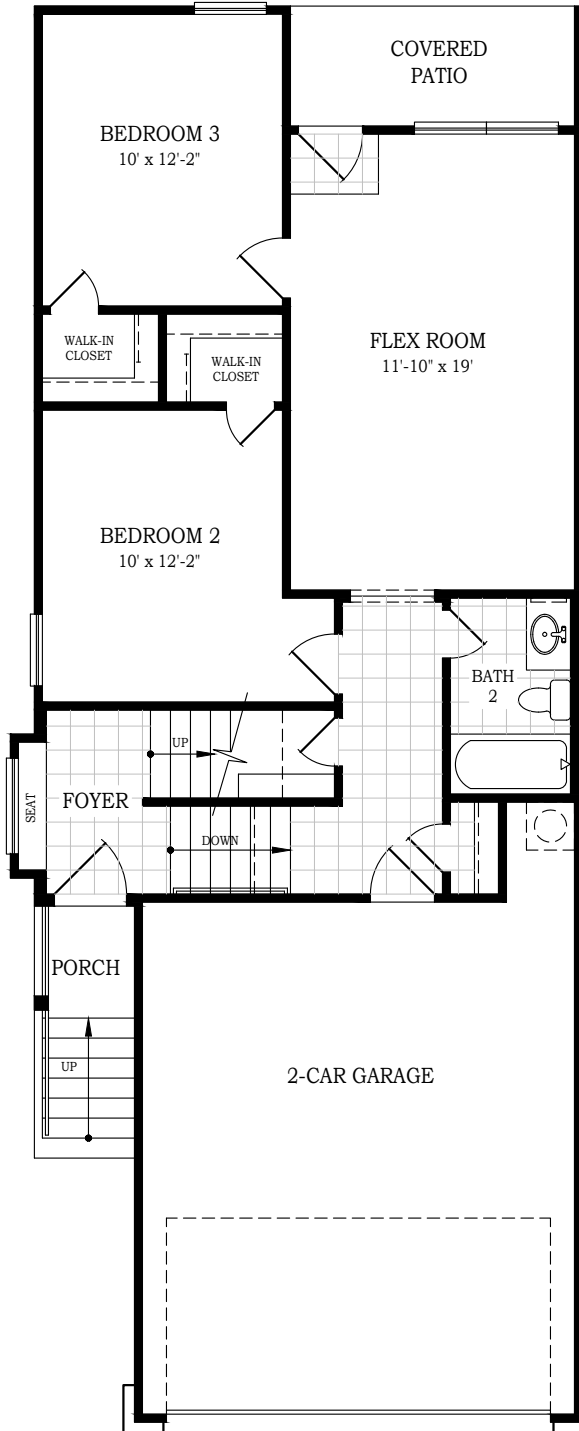
**CHESMAR
HOMES**

Setting a Higher Standard

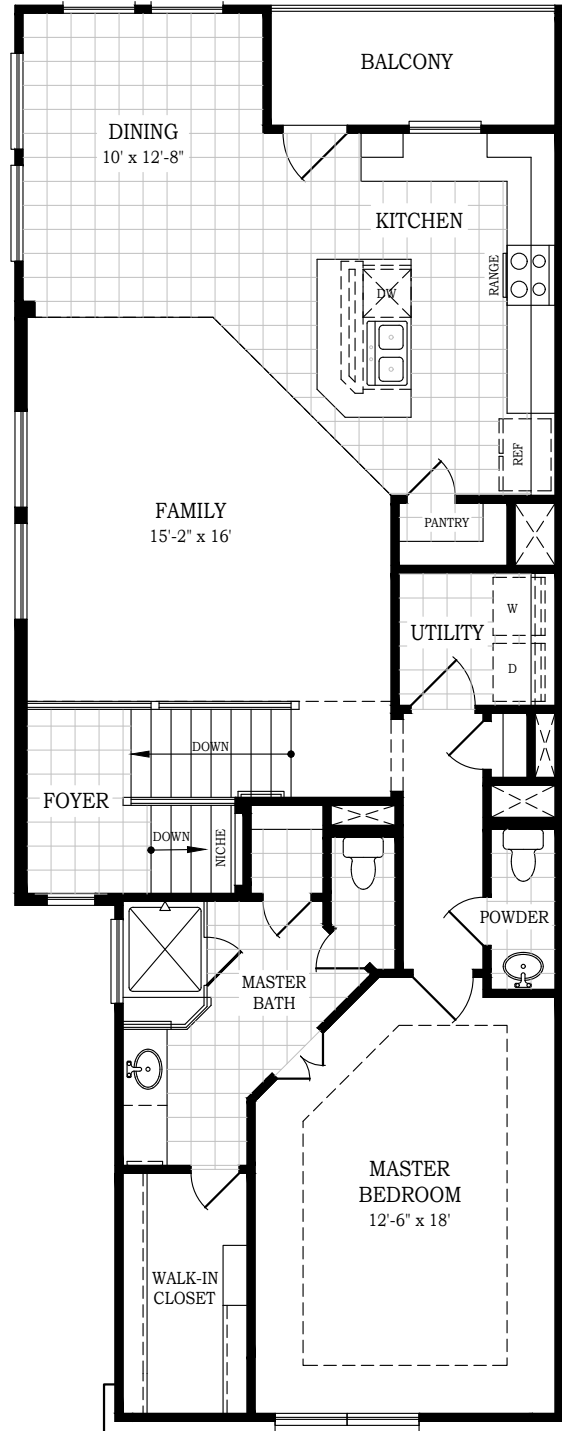
Plan 1896 •

Allyson

• 1,896 sq. ft.



1st Floor Plan



2nd Floor Plan

Square footage and room dimensions are approximate and may vary per elevation. Window placement, roof line and porches may also vary by elevation. Plans, features, prices and availability are subject to change without notice.



Setting a Higher Standard

Plan 1896/1896 • Building AA • 1,896/1,896 sq. ft.



Allyson
Elevation A

Allyson
Elevation B



Allyson
Opt. Elevation A1

Allyson
Opt. Elevation B1



Allyson
Elevation C

Allyson
Elevation D



Allyson
Opt. Elevation C1

Allyson
Opt. Elevation D1